

# TAMAN BIDOR NUSAWAJA



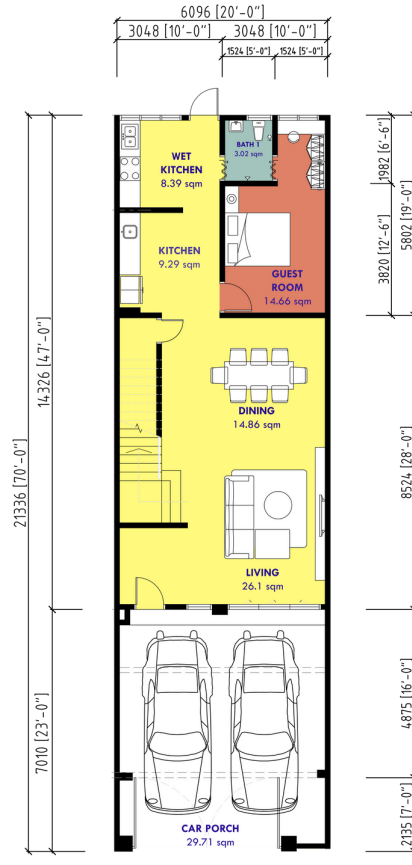


# 2091 SQFT

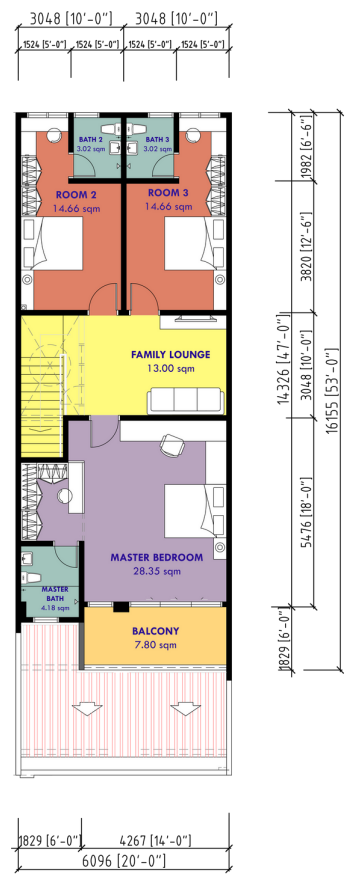
## 4 ROOMS + 4 BATHROOMS

### DOUBLE STOREY TERRACE HOUSE

**GROUND FLOOR PLAN**  
Intermediate



**FIRST FLOOR PLAN**  
Intermediate



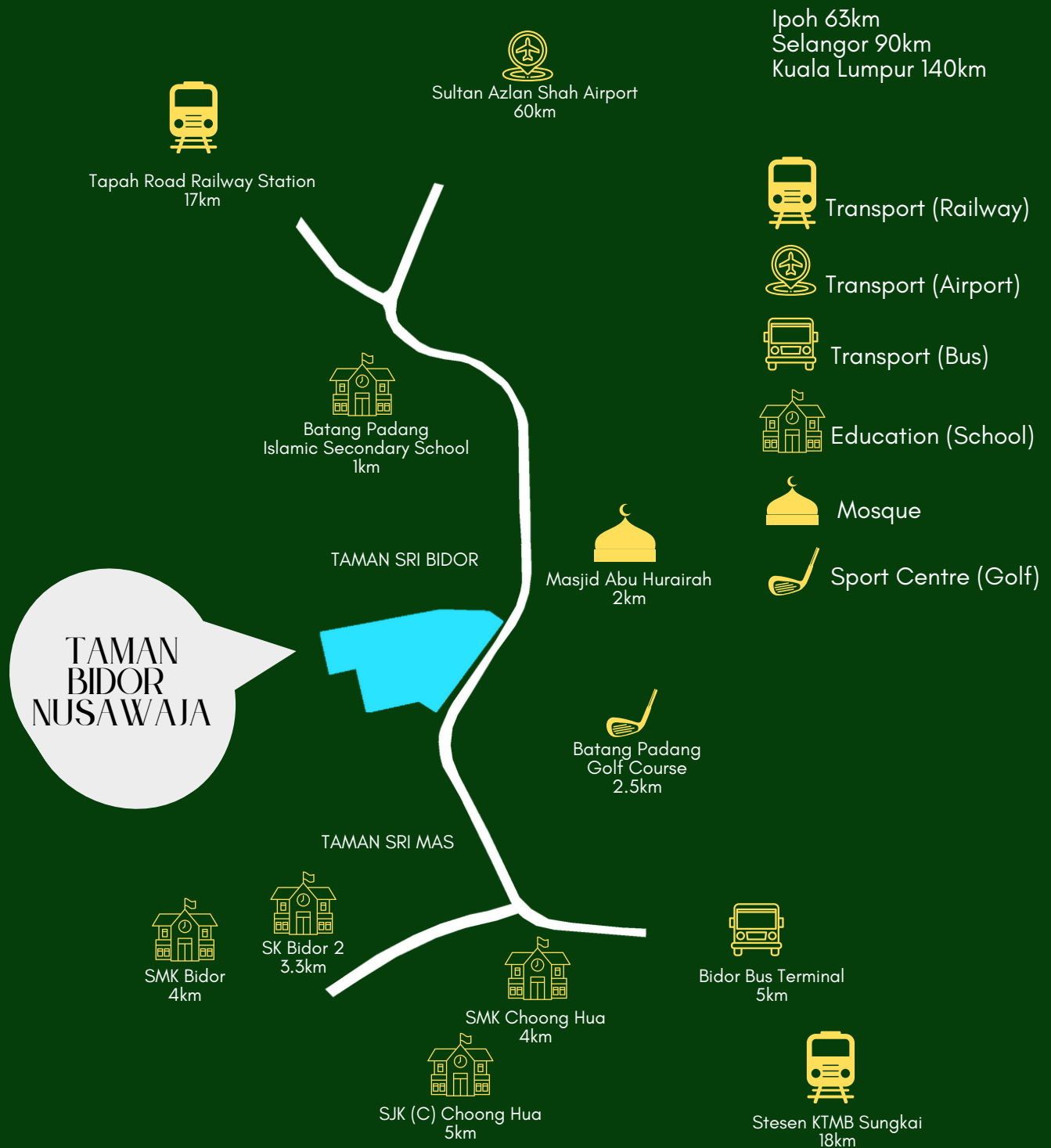


**DOUBLE STOREY TERRACE HOUSE**  
91 UNITS

**DOUBLE STOREY TERRACE SHOPLOT**  
15 UNITS







### BUILDING SPECS

Structure | Reinforced concrete (RC)  
Wall | Brick wall  
Roof | Concrete roof tiling  
Ceiling | Plaster/ skim/ cement board  
Window | Glass window with aluminium frame  
Door | Timber door

### FLOOR FINISHES

Car porch | Stamped concrete  
Living | Ceramic tiles  
Dining | Ceramic tiles  
Kitchen | Ceramic tiles  
All toilets | Ceramic tiles  
All bedrooms | Ceramic tiles  
Staircase | Ceramic tiles

### WALL FINISHES

Exterior | Weather-resistant paint  
Interior | Ceramic tiles  
Kitchen | 1500mm height wall tiles  
All toilets | Ceiling height wall tiles

### SANITARY FITTINGS

Water closet (WC) | 4 units  
Handwash basin | 4 units  
Shower head | 4 units  
Basin tap | 4 units  
Water tap | 5 units  
Kitchen sink | 1 unit

### ELECTRICAL FITTINGS

DB box | 4 units  
Lighting point | 15 units  
Aircond (AC) point | 2 units  
Ceiling fan point | 2 units  
Plug point | 8 units  
TV point | 1 unit  
Water heater point | 1 unit

**TAMAN  
BIDOR  
NUSAWAJA**



**A project by ECO MAJU HOLDING SDN BHD**

Visit us :  
W-3-05, The Gamuda Suites.12, Jalan Anggerik  
Vanilla 31/99, sek 31, Kota Kemuning, 40460 Shah  
Alam, Selangor

Contact us :  
**+012 2839 919**  
**[www.ecomaju.com.my](http://www.ecomaju.com.my)**

All renderings & illustrations in this brochure are the artist's impressions. The information contained herein is subject to change without notification as may be required by the authorities or developer's architect. Whilst every care has been taken in providing these information, the owner developers & managers cannot held responsible for variations.